

ACCUSCRIBE™

How to verify the reading is properly completed

Overview

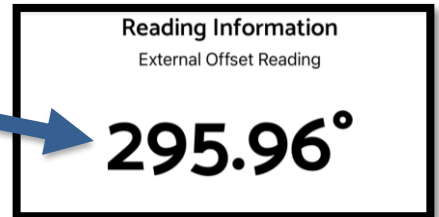
This document should be used as a reference to the automatically distributed reading report sent out by the ACCUSCRIBE™ software and give the 3rd party reading reviewer an opportunity to verify if the reading is correct.

Reading Information

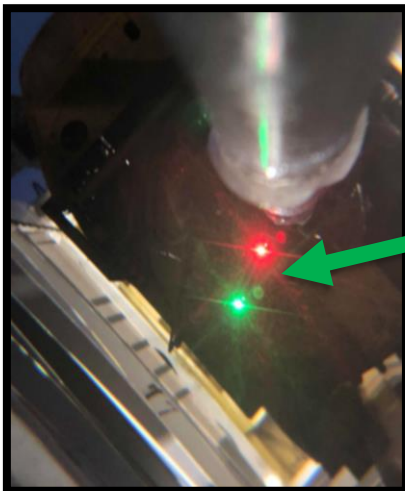
At the top of the report is the calculated offset or in a zero-degree alignment (muleshoe) no value is shown as the offset is zero.

NOTE - New users can get a field estimate by using a practice of MWD to mud motor, clockwise, looking down.

After the calculated offset section, pertinent information pertaining to the reading is displayed. Such as: Operator, Rig Name and Number, Run Number, API Number, Unit number, etc.



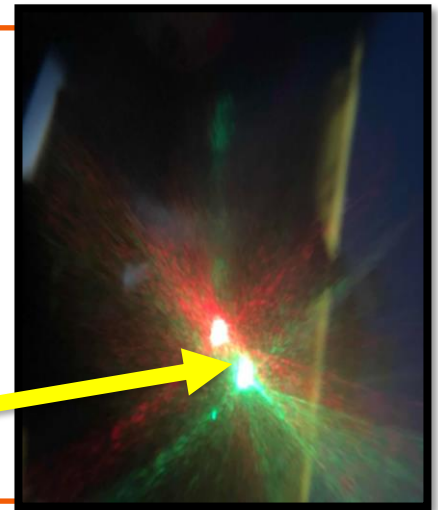
Getting an Accurate Reading



Target Lights Photo -
This picture should be examined for focus and clarity.

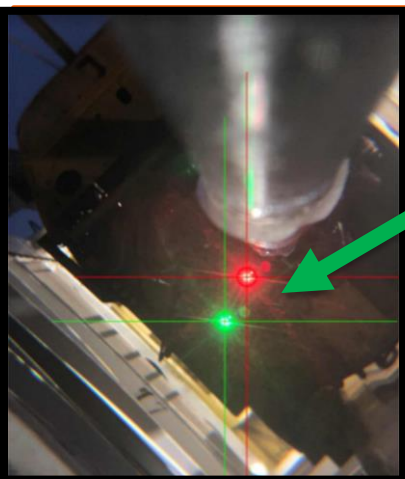
Good-quality photo should have smaller in diameter lights (high accuracy).

Poor-quality photo will have bigger diameter light (less accuracy)



Correct

Incorrect



Crosshair Verification Photo -
Verify that the red and green crosshairs are overlaid in the center of the green and red lights.

Note - It is important the user didn't select a reflection or glare that is not the light. The generally happens when the red light reflects off the drill pipe or non-magnetic collar.



Correct

Incorrect

To find out more about ACCUSCRIBE or for support contact +1 281 921 6500 or info@accuscribe.us

accuscribe.us

ACCUSCRIBE™

How to verify the reading is properly completed

Verify Proper Installation



Target Housing Photo -
Ensure the target housing is perpendicular to the MWD highside

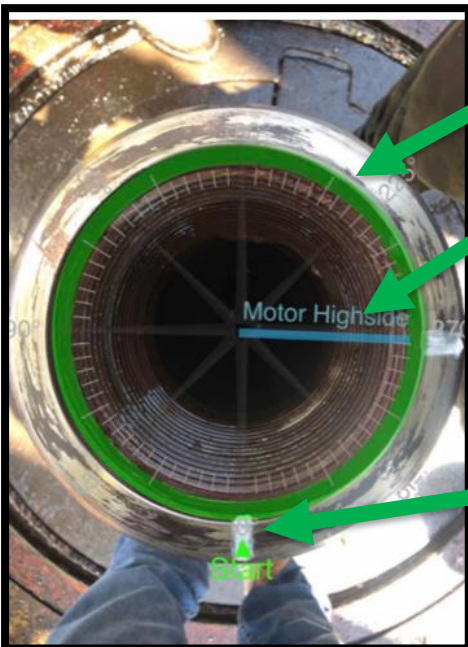
Safety - Fall restraint is attached

Camera Mount Photo - Ensure the motor mount is perpendicular to the mud motor highside.

Safety - Do not put your hands in between the magnets and the mud motor



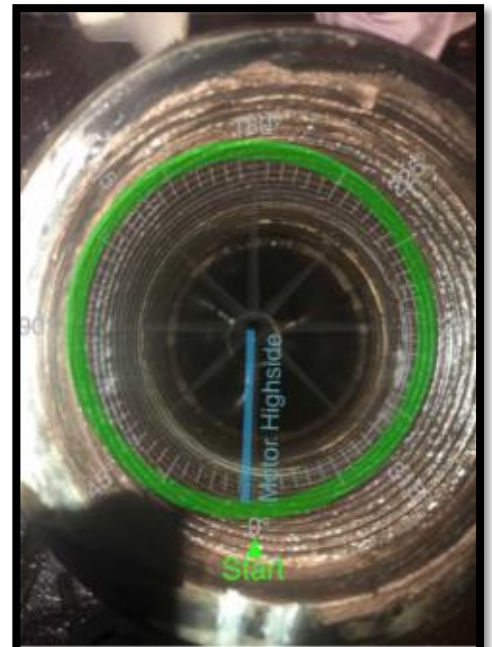
Muleshoe Verification



Muleshoe Offset Photo -
Ensure the green ring is centered in the pipe and not off center.

Verify the "Motor Highside"
mark is aligned with the second mark on the pipe thread shoulder

Ensure the start arrow is aligned
with the first mark on the pipe thread shoulder



Correct

Incorrect

To find out more about ACCUSCRIBE or for support contact +1 281 921 6500 or info@accuscribe.us

accuscribe.us